

# Metro to boost bus service September 15

by BOB LANE

Times staff reporter

Metro bus riders will get 128,000 more hours of service a year, beginning September 15.

It is the largest single increase in Metro's history — 11 per cent.

Much of the new bus service will be devoted to the University of Washington and the University District as part of a cooperative program involving the city, Metro and the U.W. to reduce traffic congestion in that area.

Metro will add new bus routes to the district. The city will test the effect of a program designed to prohibit student and staff parking on residential streets in the Montlake neighborhood. It also is making some street and signal improvements to improve bus operations.

The university has adopted a new system of parking fees designed to encourage car pooling and will sponsor several new U Trans bus routes (to be operated by Metro). The university also is selling Metro transit passes at a discount to students and staff.

Three new park-and-ride lots also will open September 15. They are at Myers Way Southwest and Southwest Olson Place; at Northeast 132nd Street and Interstate 405 in Kingsgate, and an expanded South Kirkland lot at Northeast 38th Place and 108th Avenue Northeast.

Addition of those lots will give Metro 12 permanent and 18 interim park-and-ride lots. Ten more permanent lots are to open in the next two years, Metro said.

In cooperation with Bellevue, Metro will begin operating a shuttle bus through Bellevue's business district. It will be called Bel Hop and the fare will be a dime. The buses will run every 10 minutes between 10 a.m. and 3:30 p.m.

Metro said it also will add trips on overcrowded routes and begin express runs on other routes.

Metro will add about 40 new buses to its fleet in September (including the first of its new trolleys). By mid-month, Metro will be operating 987 buses.

William Van Gelder, city traffic engineer, said the Montlake parking-limitation experiment will be in the neighborhood lying between the Ship Canal and Highway 520.

Before U.W. classes begin, the

city will post signs limiting parking on streets in the neighborhood between 8 a.m. and 5 p.m. to people who live there. A few 2-hour spaces will be provided for visitors and others.

The Montlake test is one of three authorized by the City Council. The others will be near Group Health and Providence Hospitals. Other neighborhoods have asked for similar programs and if the test at Montlake proves successful, the Engineering Department will ask for additional authority from the Council, Van Gelder said.

Many university students and staff members commonly park on residential streets in the Montlake and Ravenna neighborhoods to avoid the cost of parking in U.W.

lots. Neighborhood residents have objected and the parking-limit program was developed by the city during a two-year planning effort by the three agencies.

Metro will begin new express routes to the University District. They will include Route 70, between the campus and downtown Seattle; Route 205 between Mercer Island and the campus along 23rd Avenue East; Route 252 from Eastgate, bypassing downtown Bellevue, and Route 372 between the Kenmore park-and-ride lot and the U.W. during peak hours.

Metro also will convert the popular Lake City U Trans route (formerly sponsored by the U.W.) to a regular route, to be numbered 78.

It will provide rush-hour service

The Seattle Times A 5  
Monday, August 27, 1979

between the Kingsgate and South Kirkland park-and-ride lots and the U.W. during peak hours. It also will operate two new U Trans routes for the university, serving students from Redmond and in the Queen Anne-Fremont neighborhoods.

**2 SINKS MAKE  
A COUNTER  
BALANCE**  
AT  
**AURORA  
PLUMBING & ELECTRIC**  
14330 Aurora  
**364-1140**

## Specialists in the World of Sport

# sportswest

DIVISION OF PAY 'N SAVE CORPORATION PRICES EFFECTIVE THRU SEPTEMBER 2, 1979

### Free Firearm Safety Courses

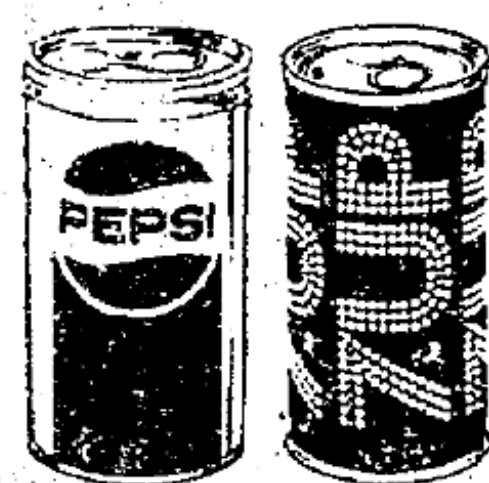
to be taught at all Sportswest stores except U-Village beginning now through Sept. 15. Details available at the gun department of all stores except U-Village. The certificate received upon completion of this course is required for purchase of a hunting license by anyone under 18.

### Youth Safe Shooters Day



September 15  
Kenmore Gun Ranges

Limited to youths between 12 & 16 years of age. Firearm safety card is necessary for entrance. FREE instruction and clay target provided. Shotguns only will be used in the shoot. Sign-up sheets available at all Sportswest stores. Supported by KAYO radio.



6 Pack Pepsi or 7-Up  
Choose from Pepsi, 7-Up,  
Diet Pepsi or Diet 7-Up.

**1.29**

6 pack



### Penn 109MS Salmon Reel

Free spool level wind with 334:1 gear ratio. Approx. capacity of 200 yds., 20 lb. test monofilament.

Reg. 20.98

**17.99**

### Penn 209M Salmon Reel

Free spool level wind 3:1 gear ratio. Approx. capacity 300 yds. of 20 lb. test monofilament.

Reg. 24.98

**19.99**

### Les Davis

#### Salmon Leaders

Solid lead 20 lb., 3/0 or 4/0 & 15 lb., 2/0 or 3/0. 1 leader per pack.

Reg. 29¢

**19¢**

each

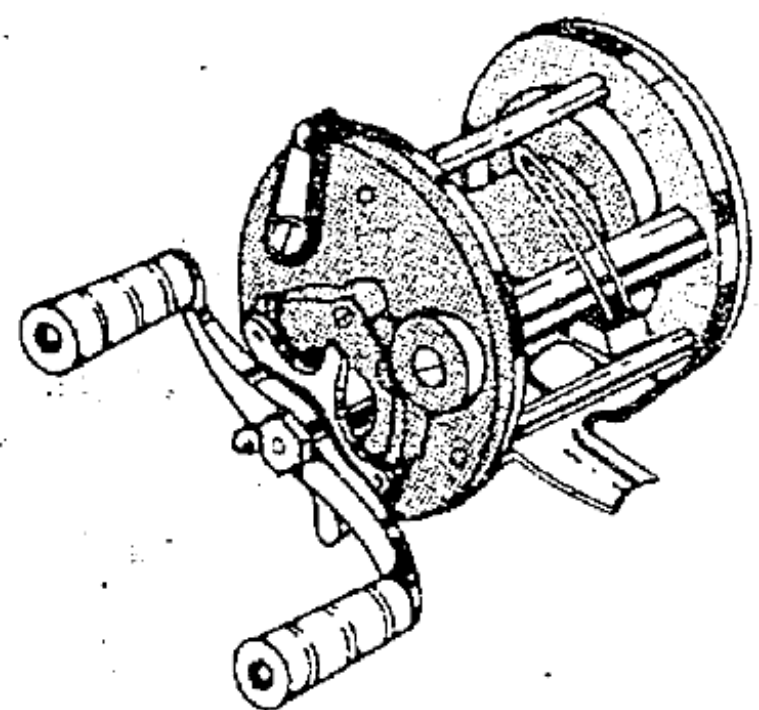
### Berkley 8 1/2' Mooching Rod

2 piece medium action fiberglass rod with chrome plated steel guides & a glass to glass ferrule. Model B91.

Reg. 23.98

**17.99**

All items are not available at U-Village except for six-pack Pepsi and swimsuits

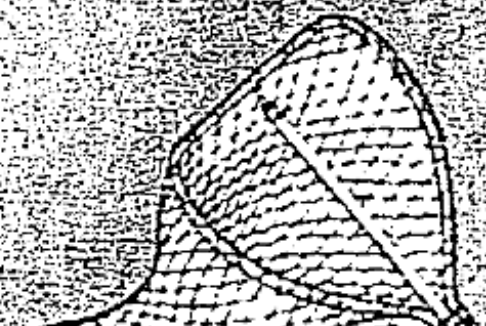


### Rapala Fillet Knife

6" stainless steel blade with sheath. Use for bait cutting & cleaning.

Reg. 7.98

**5.99**



### Lin-Line Salmon Net

22" X 29" hoop size with a 4' retractable handle & a poly mesh bag. Model 7K1P.

Reg. 10.98

**7.99**

### Plastic Fish Bags

20" X 40" bags made of 4 mil. thick plastic.

Reg. 39¢

**29¢**

each

### Sportswest

#### Salmon Trolling Rod

2 piece 7 ft. fiberglass rod with ceramic guides & a wooden handle with a chrome plated reel seat. Model SWT7.

Reg. 23.98

**17.99**

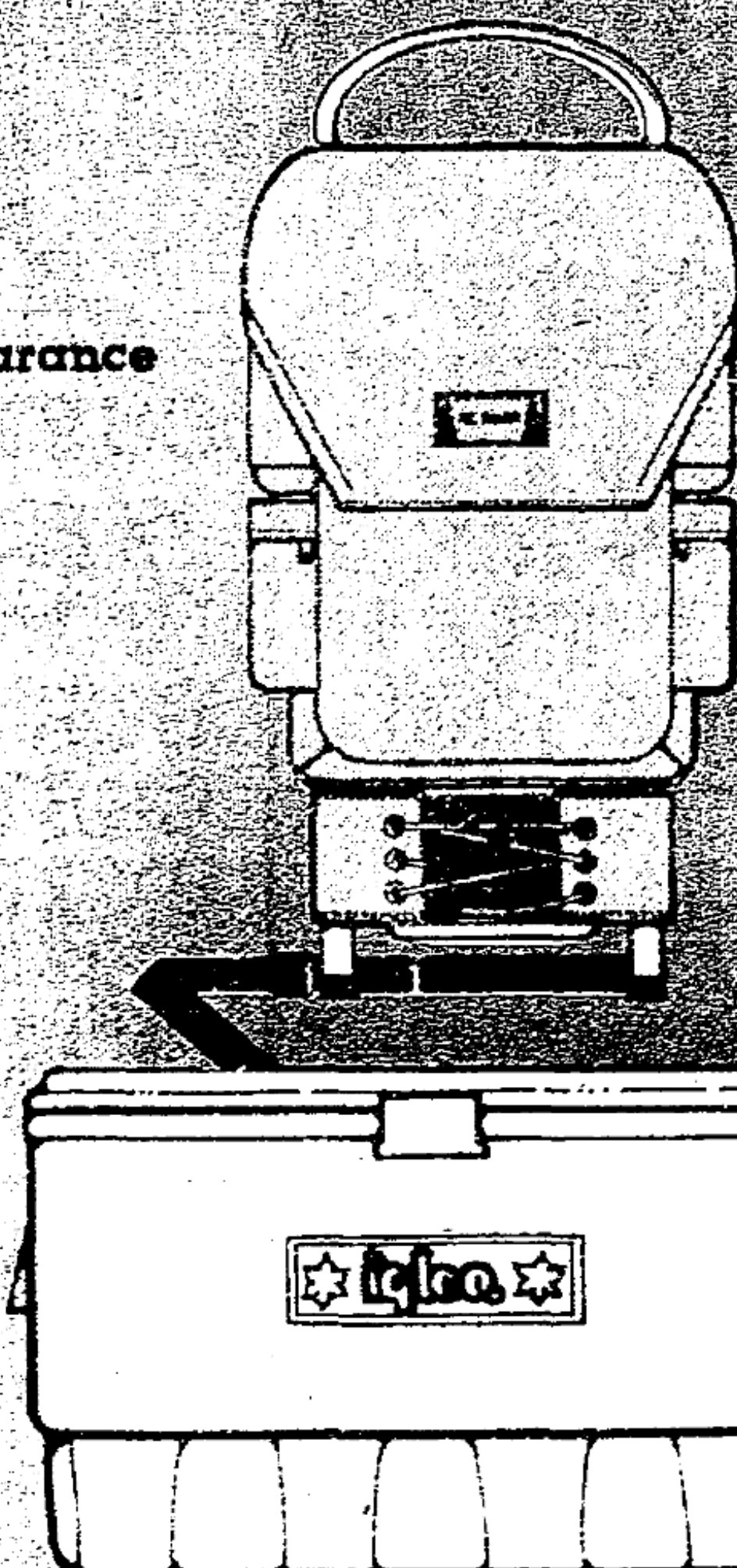
### Frame Back Pack Clearance

All models & brands in stock.

**25% OFF**

### All Ice Chests & Beverage Coolers In Stock

**20% OFF**



**Open  
Labor Day  
Sept. 3  
11-5**

### All Hiking Boots In Stock

Men's & women's models in limited sizes

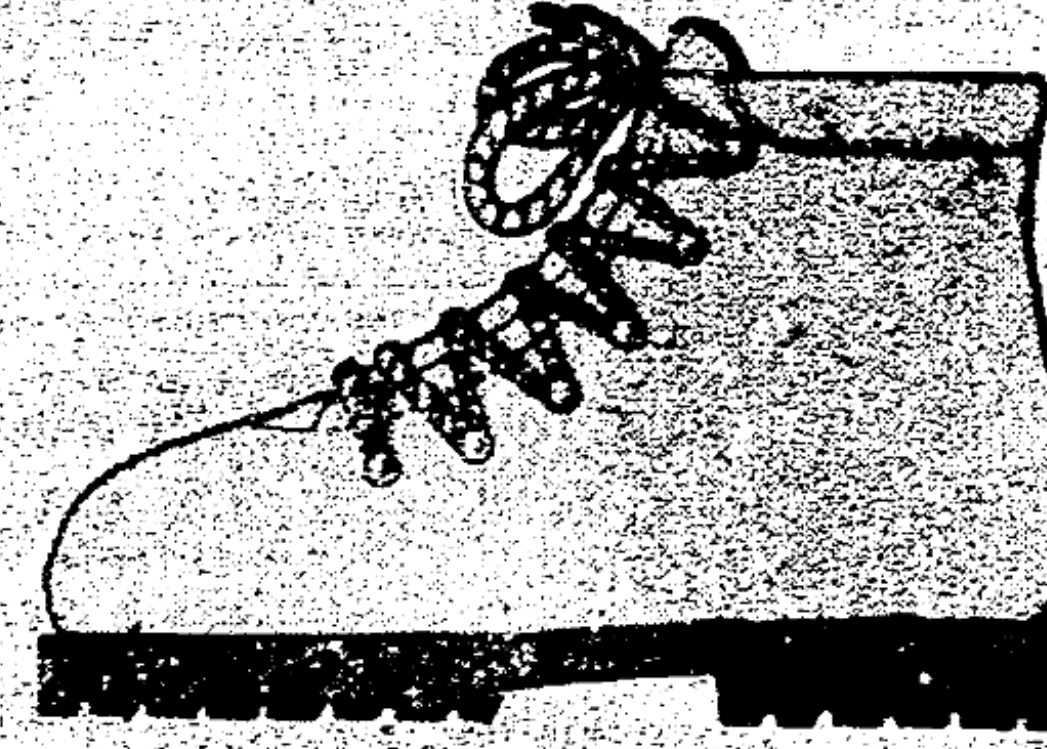
**25% OFF**

### Men's & Women's Swimsuit Clearance

Men's suits are athletic short style in a camo blend with nylon liner & a draw string waist band. Ash colors with contrasting piping. 300 only.

Women's include selected styles from Speedo & Artek in nylon & lycra. Choose from solid colors & fashion prints. 100 only.

**1/3 OFF**

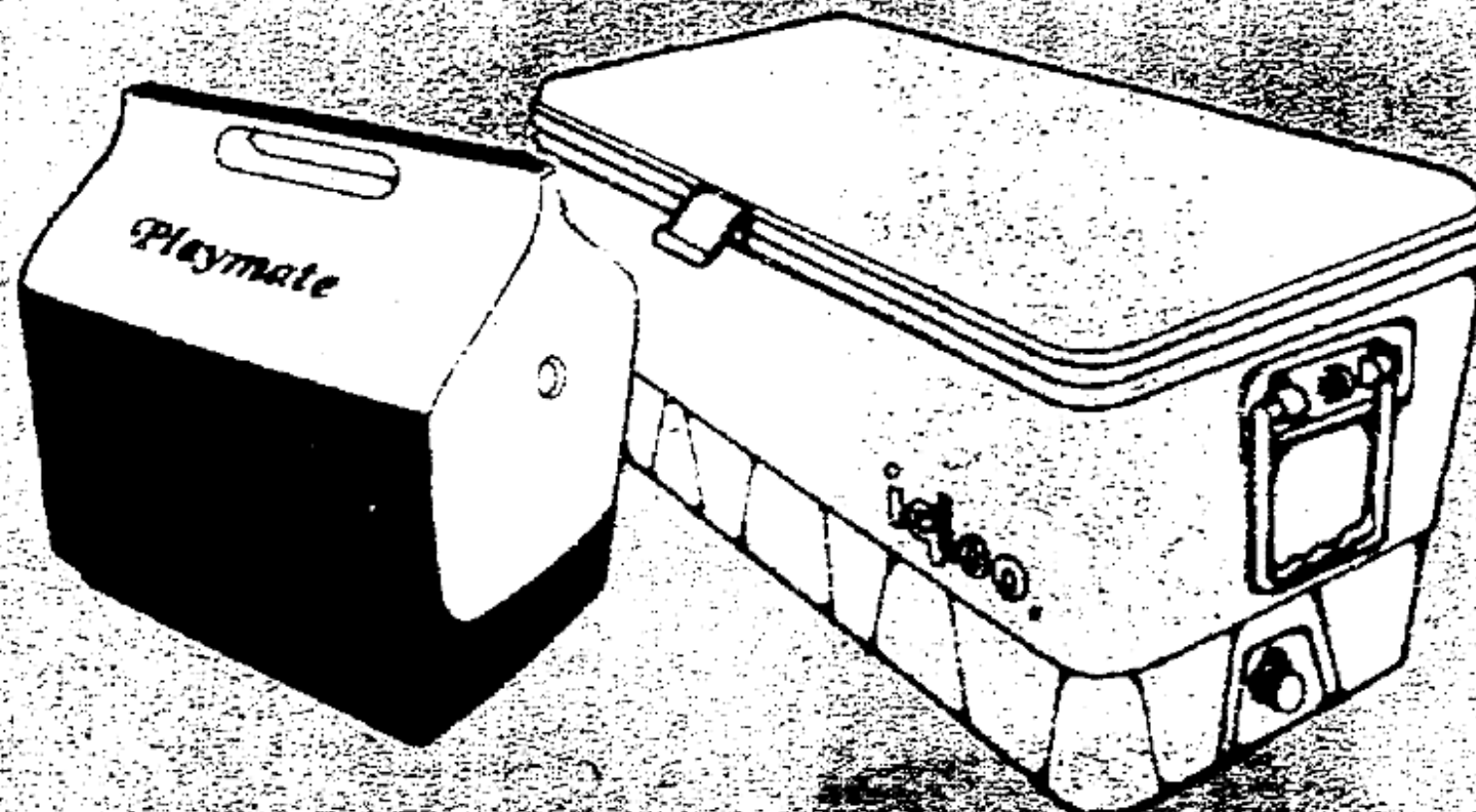


### Raichle Dakota Hiking Boot

One piece leather upper with vibram sole. Proven trail boot.

Reg. 55.00

**39.99**



### Igloo 15 Qt. Playmate Cooler

Polyethylene insulated cooler with a plastic handle. 15 quart. Holds 16 cans of beverages.

Reg. 14.95

**11.49**



**Charge it!**

Most convenient locations  
Burien • Renton • Westwood Village • Crossroads • Ballard • Aurora Village • SeaTac Village • Totem Lake • U-Village • Northgate Mall

Store Hours: Mon.-Fri. 9:30-9:00 Saturday 9:30-6:00 Sunday 11:00-5:00

SPORTSWEST Advertiser Merchandise Policy: "Our firm intention is to have every advertised item as described in the ad, in stock and on our shelves. If an advertised item is not available for purchase due to any unforeseen reason, we will issue a rain check, on request, so that you may purchase the item at a later date. Our policy is to serve our customers."